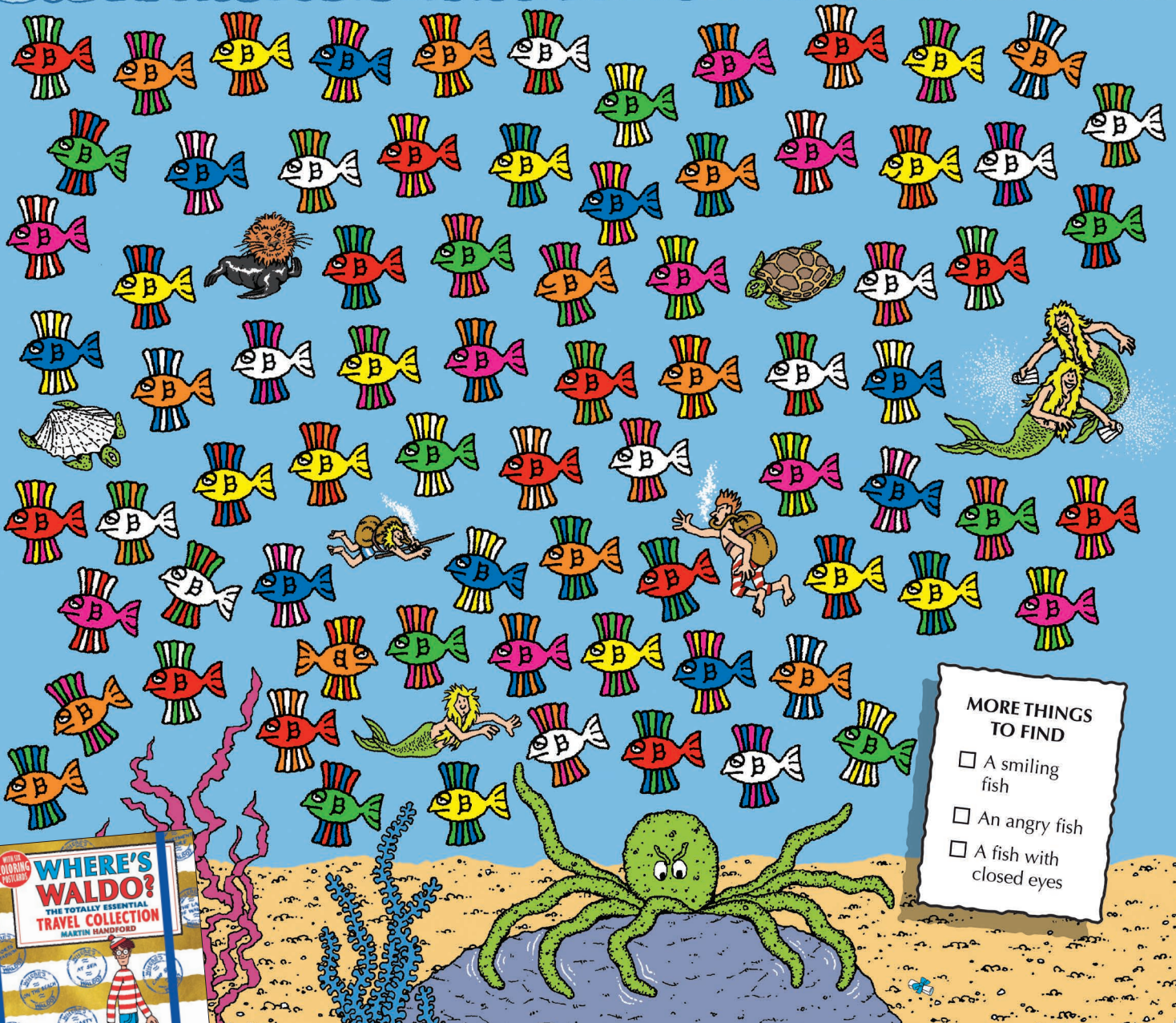
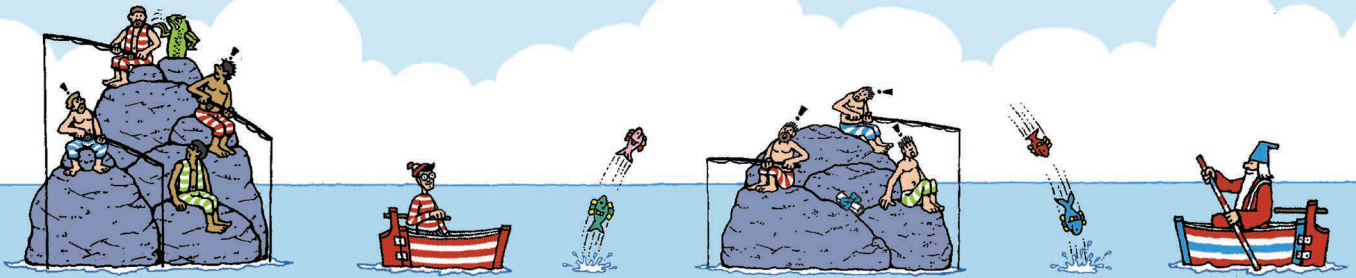


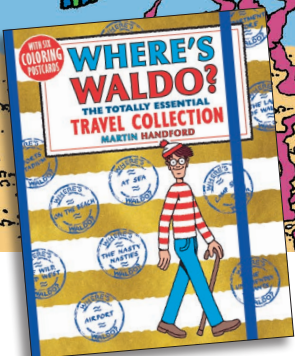
Waldo and his friends are enjoying a day at sea, but something is fishy!

Match up the sets of three identically colored fish. One fish is not part of a set, so have a splish-splashing time finding out which one!



MORE THINGS TO FIND

- ☐ A smiling fish
- ☐ An angry fish
- ☐ A fish with closed eyes



Take Waldo on all your summer adventures with
Where's Waldo? The Totally Essential Travel Collection.